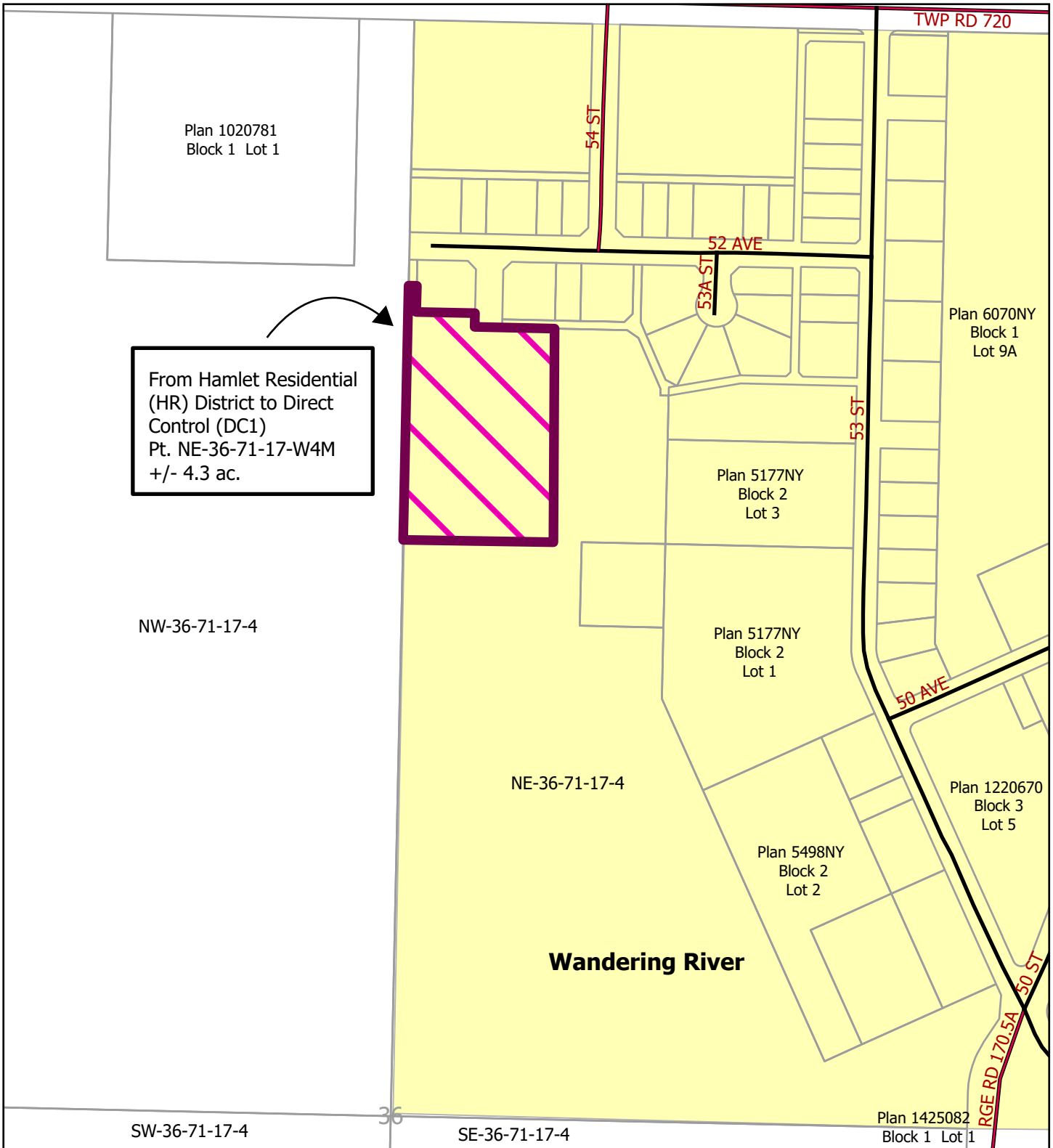


# Schedule "A"



From Hamlet Residential (HR) District to Direct Control (DC1)  
Pt. NE-36-71-17-W4M  
+/- 4.3 ac.

NW-36-71-17-4

NE-36-71-17-4

**Wandering River**

SW-36-71-17-4

SE-36-71-17-4

Plan 1425082  
Block 1 Lot 1

Athabasca County  
Alberta



Drawn : 2026-01-19

## PLAN SHOWING:

**Bylaw: 011-2026**

From Country Residential (CR1) District to Direct Control (DC1)

Athabasca County makes no representation or warranties regarding the information contained in this document, including without limitation, whether said information is accurate or complete. Persons using this document do so solely at their own risk, and Athabasca County shall have no liability to such person for any loss or damage whatsoever. This document shall not be copied or distributed to any person without the express written consent of Athabasca County, Copyright Athabasca County. All rights Reserved.

